

SAVE TIME & MAKE MONEY USING AN OMAX[®] WITH YOUR CNC

Competitive Advantage

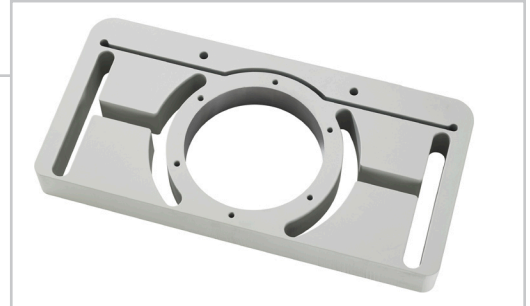
- Faster turnaround
- Competitive price for finished part
- Generate more income per day for shop owner
- Increase capacity to handle the jobs that require typical milling precision
- More parts per plate stock
- Complex shapes
- Increase capability: machine virtually any material

Motor Plate

Material: 1 ¼" thickness - 4340 Steel
Part Size: 5.9" x 12.1"

CNC Milling Time: 270 minutes

Description: Part fully machined on a CNC mill.



35% Time Savings with Combined OMAX JetMachining[®] & CNC Milling Time: 174 minutes

Description: All slots and periphery machined on the OMAX with center hole diameter left undersized. Drill and tap, and precision boring completed on CNC mill.

Swivel Tube Clamp

Material: 1" thickness - Aluminum
Part Size: 4.25" x 5.80"

CNC Milling Time: 15 minutes

Description: Part fully machined on a CNC mill.



40% Time Savings with Combined OMAX JetMachining & CNC Milling Time: 9 minutes

Description: Entire I.D. and periphery machined on the OMAX.
Counter bores, holes drilled, tapped, and chamfered on CNC mill using multiple part fixtures

For additional information on OMAX JetMachining Centers, call 1.800.838.0343 or 253.833.0343
Or visit our website www.omax.com



SAVE TIME & MAKE MONEY USING AN OMAX WITH YOUR CNC

Competitive Advantage

- Faster turnaround
- Competitive price for finished part
- Generate more income per day for shop owner
- Increase capacity to handle the jobs that require typical milling precision
- More parts per plate stock
- Complex shapes
- Increase capability: machine virtually any material

Foot Bracket

Material: 1/2" thickness - 6061 Aluminum

Part Size: 1.8" x 3.0"

CNC Machining Time: 8 minutes

Description: Part fully machined on a CNC mill, multiple clampings required.



59% Time Savings with Combined OMAX JetMachining & CNC Milling Time: 3.3 minutes

Description: I.D., slot, and periphery machined on the OMAX. Holes drilled, tapped, and chamfered on a CNC mill in one operation.

Bracket, Motor Plate

Material: 1/2" thickness - 6061 Aluminum

Part Size: 6.75 diameter

CNC Milling Time: 10 minutes

Description: Part fully machined on a CNC mill.



45% Time Savings with Combined OMAX JetMachining & CNC Milling Time: 5.5 minutes

Description: I.D. and periphery, using multiple fixtures, machined on the OMAX. Drill and tap completed on CNC mill.

For additional information on OMAX JetMachining Centers, call 1.800.838.0343 or 253.833.0343
Or visit our website www.omax.com

